

# SL BRACKETS

## PRO-SNAP SL Bracket

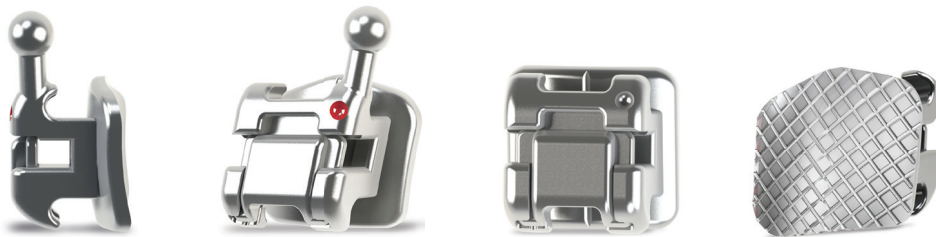
Selbstligierendes passives Bracketssystem

- Torque in der Basis
- 80 Mesh Pad
- 17-4PH Stainless Steel
- 3er, 4er, 5er mit Hakchen
- Erhaltlich in: Roth .018" & .022"

## PRO-SNAP SL Bracket

Passive Self-ligating Bracket

- Torque in base for level slot line-up
- Metal Injection Molding (MIM) with 17-4PH stainless steel for smooth and non-deformable slot
- Ball Hooks available on 3's, 4's & 5's
- Center Scribe Line for more accurate bracket placement
- Symmetrical Tie-Wings with generous space for Ligation



Öffnungsinstrument  
Ab 10 Falle GRATIS dazu  
Opening Instrument



### PRO-SNAP SL Bracket

### ROTH

▲ OK   Upper			.018"	.018"	.022"	.022"
	Torque	Angulation	Left	Right	Left	Right
U1	12°	5°	21-211-21	21-211-11	21-221-21	21-221-11
U2	8°	9°	21-211-22	21-211-12	21-221-22	21-221-12
U3	-2°	13°	21-211-23	21-211-13	21-221-13	21-221-23
U3 w/hook	-2°	13°	21-211-23HK	21-211-13HK	21-221-23HK	21-221-13HK
U4	-7°	0°	21-211-24	21-211-14	21-221-24	21-221-14
U4 w/hook	-7°	0°	21-211-24HK	21-211-14HK	21-221-24HK	21-221-14HK
U5	-7°	0°	21-211-25	21-211-15	21-221-25	21-221-15
U5 w/hook	-7°	0°	21-211-25HK	21-211-15HK	21-221-25HK	21-221-15HK
▼ UK   Lower			.018"	.018"	.022"	.022"
	Torque	Angulation	Left	Right	Left	Right
L1	-1°	+2°	21-211-31	21-211-41	21-221-31	21-221-41
L2	-1°	+2°	21-211-32	21-211-42	21-221-32	21-221-42
L3	-11°	7°	21-211-33	21-211-43	21-221-33	21-221-43
L3 w/hook	-11°	7°	21-211-33HK	21-211-43HK	21-221-33HK	21-221-43HK
L4	-17°	-1°	21-211-34	21-211-44	21-221-34	21-221-44
L4 w/hook	-17°	-1°	21-211-34HK	21-211-44HK	21-221-34HK	21-221-44HK
L5	-22°	-1°	21-211-35	21-211-45	21-221-35	21-221-45
L5 w/hook	-22°	-1°	21-211-35HK	21-211-45HK	21-221-35HK	21-221-45HK

1 Packung = 10 Stuck  
1 Package = 10 pieces